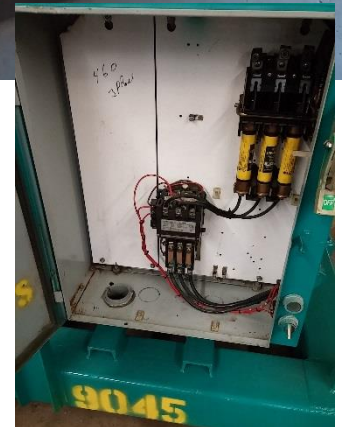




COMPLETE DEWATERING
PUMPS & WELLPOINTS

386-426-1345
carl@cdpwinc.com



**Used Pump for Sale SN 9045 4" Electric Wellpoint Pump
Complete Factory Refurbished Dec. 2017!**

With current control panel (460 volts only) \$6,750.00 (new unit price \$18,950.00)

**With new control panel that can be field wired for 208 / 230 / 460 volts, \$9,150.00
(includes dual voltage contactor coil, lower voltage fuses)**

Pump 9045, 4VAWP-E20-C3-F 4" vacuum assisted wellpoint pump
Manufactured July 2006

20 HP 3 Phase 1800 RPM TEFC Electric Motor

As-is control panel wired for 480 volts / 24.4 amps / 60 hertz

(the current control panel cannot handle the motor amperage if re-wired for 208 or 230 volts. You will have to purchase the larger control panel (quoted above) to handle all voltage configurations. Additional cost includes installation of the panel).

External disconnect, fusible links, overload protection, On-Auto-Off selector switch, start button

COMPLETE 4" centrifugal pump, capacity to 700 GPM, heads to 40' TDH

Single C3 air cooled vacuum pump, up to 70 cfm air handing

Warranty – 6 months parts. Labor is covered if the unit is shipped back to CDPW. Shipping charges to/from CDPW are not covered by warranty.

Will run for one hour on our test system while completing final inspection, can be customer witnessed at no extra charge.

Terms – Due before shipping. Credit card, check, wire transfer.

Freight – FOB Edgewater, FL.

Taxes – CDPW does not collect sales or use taxes outside the State of Florida. Any sales or use taxes are the purchaser's responsibility.